

Kew Triple 6x Vertical Switch Plate

Paintable 39607

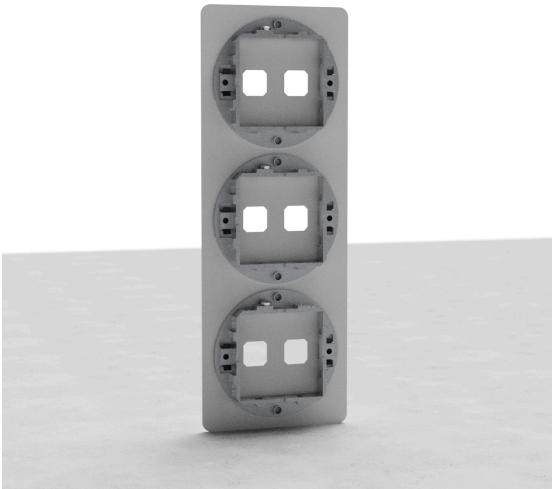
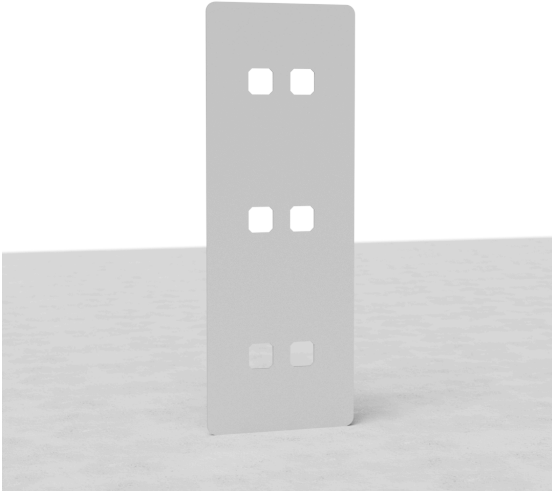
The switches and sockets in our Kew collection are installed with our bespoke back boxes. This makes them perfect for new construction projects.

They're particularly subtle too, thanks to the really slim front plates that sit perfectly flush to the wall.

Using our components, you can create any combination of switches or sockets that you need.

This Kew paintable triple 6x vertical switch plate works with any six of our toggle switches. If you'd like to add a rotary dimmer switch, you'll need to use our triple 3x switch plate, which you can fit in a vertical position.

We prepare our paintable plates using our own etch primer, so you can easily paint them the same colour as your walls.



CORSTON

ARCHITECTURAL DETAIL

- Made from solid brass
- Etch primer allows paint to adhere well for a seamless custom finish
 - Ultra-slim, flush-fit plate
 - Screwless design and easy clip-on installation
- Well-suited to new build homes and developments where a back box hasn't already been fitted
 - Must be installed with our triple back box
- You'll also need our 9mm render trim for brick walls or 3mm plaster trim for skimmed plasterboard
 - Use our precisely sized brick or plasterboard hole saw for easy installation

- Metal die-cast chassis
- Finished in etch primer
- Can be fitted horizontally or vertically

✉ hi@corston.eu

☎ +44 (0) 1249 549332