

# CORSTON

ARCHITECTURAL DETAIL



## Kew Double 2x Switch & 1x Socket Plate

Antique Brass 30153

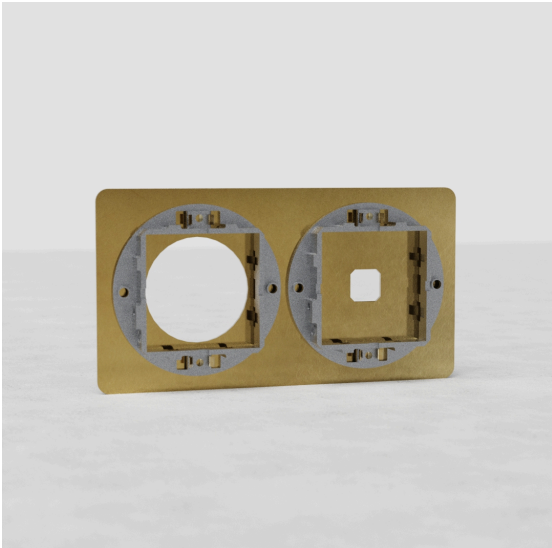
The switches and sockets in our Kew collection are installed with our bespoke back boxes. This makes them perfect for new construction projects.

They're particularly subtle too, thanks to the really slim front plates that sit perfectly flush to the wall.

Using our components, you can create any combination of switches or sockets that you need.

This Kew double 2x switch and 1x socket plate in antique brass works with any two of our antique brass toggle switches and any one of our round socket modules.

Antique brass is what's called a 'living' finish because it reacts to the air and moisture around it, causing it to darken (especially in the areas you touch most). We've given it a head start by ageing it by hand, so it has that antique look right out the box.



✉ [hi@corston.eu](mailto:hi@corston.eu)

☎ +44 (0) 1249 549332

# CORSTON

ARCHITECTURAL DETAIL

- Made from solid brass
- Ultra-slim, flush-fit plate
- Screwless design and easy clip-on installation
- Well-suited to new build homes and developments where a back box hasn't already been fitted
  - Must be installed with our double back box
- You'll also need our 9mm render trim for brick walls or 3mm plaster trim for skimmed plasterboard
  - Use our precisely sized brick or plasterboard hole saw for easy installation

- Metal die-cast chassis
- Must be installed with our double back box

✉ [hi@corston.eu](mailto:hi@corston.eu)

☎ +44 (0) 1249 549332