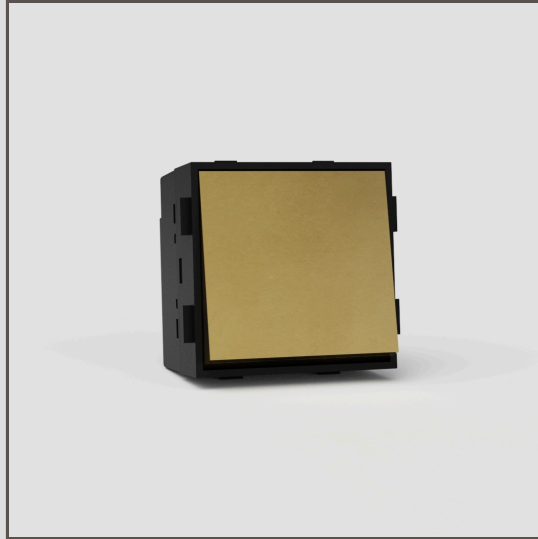


## Retractive Rocker Switch EU - Antique Brass Black

39593



Using our switch components, you can create any combination of plate and switch that you need.

We've made this retractive rocker switch from solid brass, rather than metal-wrapped plastic, for perfectly crisp edges. We then hand-age it for an antique look.

A retractive switch flicks back into the top 'off' position when you let go. You can use it for things like doorbells, in-sink food waste grinders and to dim lights (with either a remote dimmer or our in-line unit).

Antique brass is what's called a 'living' finish because it reacts to the air and moisture around it, causing it to darken (especially in the areas you touch most). We've given it a head start by ageing it by hand, so it has that antique look right out the box.

- Patented electrical system engineered to make our signature flush-fit design possible
- Must be used with our plates and back boxes
- You'll also need our 9mm render trim for brick walls or 3mm plaster trim for skimmed plasterboard
- Use our precisely sized brick or plasterboard hole saw for easy installation