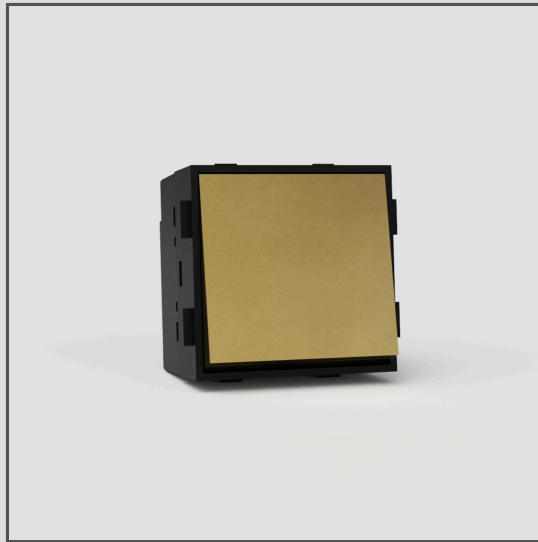


Intermediate Rocker Switch EU - Antique Brass Black

37939



Using our switch components, you can create any combination of plate and switch that you need.

We've made this intermediate rocker switch from solid brass, rather than metal-wrapped plastic, for perfectly crisp edges. We then hand-age it for an antique look.

Combine an intermediate switch together with two-way switches on a lighting circuit that you control from three or more places.

Antique brass is what's called a 'living' finish because it reacts to the air and moisture around it, causing it to darken (especially in the areas you touch most). We've given it a head start by ageing it by hand, so it has that antique look right out the box.

- Patented electrical system engineered to make our signature flush-fit design possible
- Engineered for a satisfying click
- Must be used with our plates and back boxes
- You'll also need our 9mm render trim for brick walls or 3mm plaster trim for skimmed plasterboard
- Use our precisely sized brick or plasterboard hole saw for easy installation