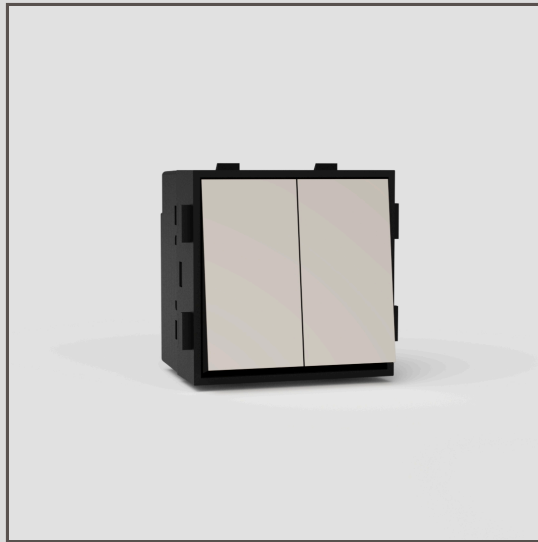


Double Intermediate Rocker Switch EU - Polished Nickel Black

37468



Using our switch components, you can create any combination of plate and switch that you need.

We've made this double intermediate rocker switch from solid brass, rather than metal-wrapped plastic, for perfectly crisp edges, and finished it in polished nickel.

Combine an intermediate switch together with two-way switches on a lighting circuit that you control from three or more places.

Polished nickel is our answer to chrome. It's a bit warmer, which we think is more versatile, so you can use it with warm or cool colour palettes.

- Patented electrical system engineered to make our signature flush-fit design possible
- Engineered for a satisfying click
- Must be used with our plates and [back boxes](#)
- You'll also need our 9mm render trim for brick walls or 3mm plaster trim for skimmed plasterboard
- Use our precisely sized brick or plasterboard hole saw for easy installation