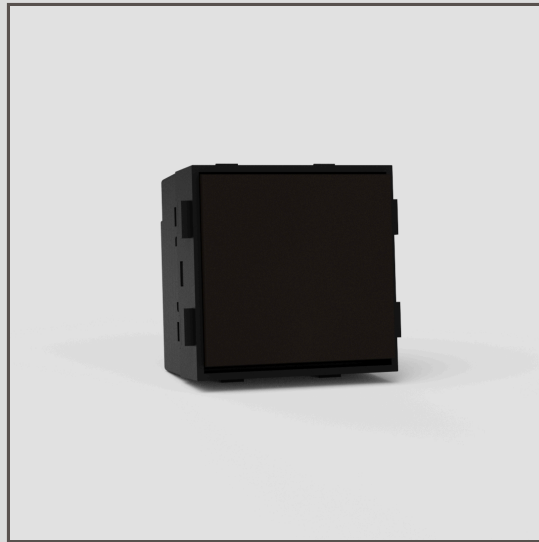


Centre Retractive Rocker Switch EU - Bronze Black

33926



Using our switch components, you can create any combination of plate and switch that you need.

We've made this centre-retractive rocker switch from solid brass, rather than metal-wrapped plastic, for perfectly crisp edges, and finished it in bronze.

A centre-retractive switch flicks back to the centre 'off' position when you let go. You can use it for things like electronic blinds and to dim lights (with either a remote dimmer or our in-line unit).

Bronze is our boldest finish, but it isn't shiny or bright, so it has a subtle side to it too. It's a deep matt brown colour that's almost black in some lights.

- Patented electrical system engineered to make our signature flush-fit design possible
- Must be used with our plates and [back boxes](#)
- You'll also need our 9mm render trim for brick walls or 3mm plaster trim for skimmed plasterboard
- Use our precisely sized brick or plasterboard hole saw for easy installation