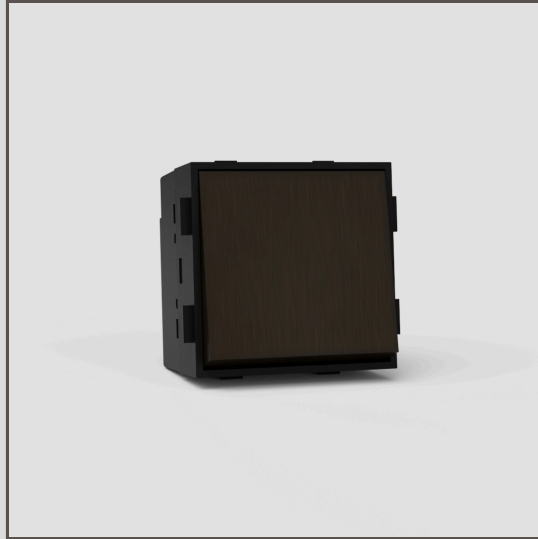


## Two Way Rocker Switch EU - Bronze Black

32060



Using our switch components, you can create any combination of plate and switch that you need.

We've made this two-way rocker switch from solid brass, rather than metal-wrapped plastic, for perfectly crisp edges, and finished it in bronze.

Use a two-way switch where you want to simply turn a lighting circuit on and off. You can have up to two of these on one circuit. For three or more, add an intermediate switch.

Bronze is our boldest finish, but it isn't shiny or bright, so it has a subtle side to it too. It's a deep matt brown colour that's almost black in some lights.

- Patented electrical system engineered to make our signature flush-fit design possible
- Engineered for a satisfying click
- Must be used with our plates and [back boxes](#)
- You'll also need our 9mm render trim for brick walls or 3mm plaster trim for skimmed plasterboard
- Use our precisely sized brick or plasterboard hole saw for easy installation