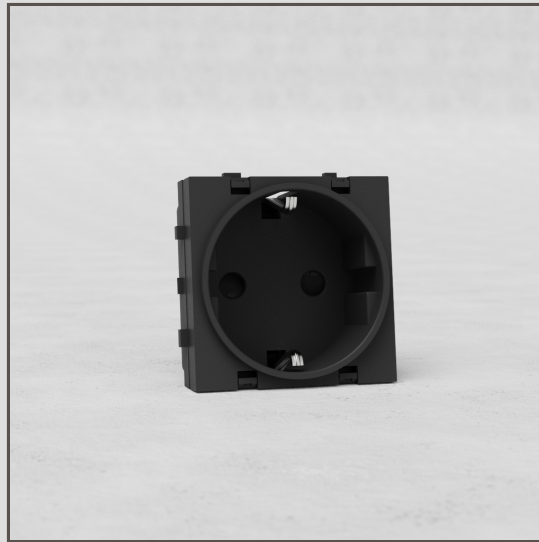


## Schuko Type F Power Module Round - Black

33062



Use this Schuko module with any of our round plates to create a custom combination.

- Patented electrical system engineered to make our signature flush-fit design possible
- Must be used with our plates and back boxes
- You'll also need our 9mm render trim for brick walls or 3mm plaster trim for skimmed plasterboard
- Use our precisely sized brick or plasterboard hole saw for easy installation
- Fits Corston EU round switch plates
- Conforms to DIN 620
- 16A-250V
- Screwless terminals
- Must be used with Corston EU plates and back boxes