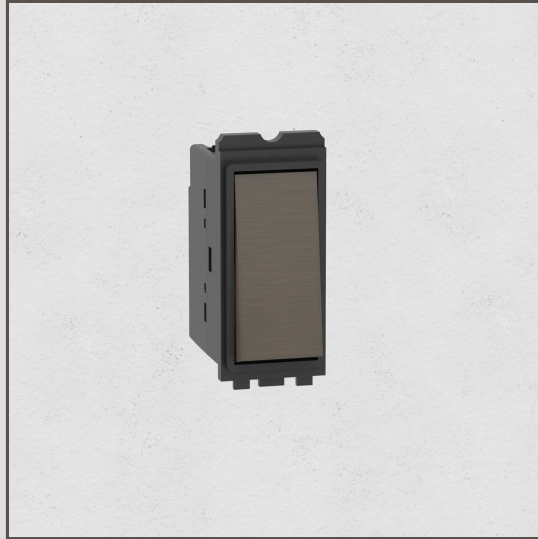


## Double Pole Rocker Switch - Bronze Black

18650



Using our switch components, you can create any combination of plate and switch that you need.

This Bronze-finished double-pole rocker switch is made from solid brass to create perfectly crisp edges.

Use a double-pole switch to turn appliances on and off. It interrupts both the live and neutral wires, which basically just means it's a safer version of a two-way switch.

Bronze is our boldest finish, but it isn't shiny or bright, so it has a subtle side to it too. It's a deep matt brown colour that's almost black in some lights.

- Engineered for a satisfying click
- Works with either our solid brass switch plates in the Bronze finish or our Clear Black plates
- Switches Rated to 16A
- 230-250V ~ 50Hz
- Complies with BS EN 60669-1