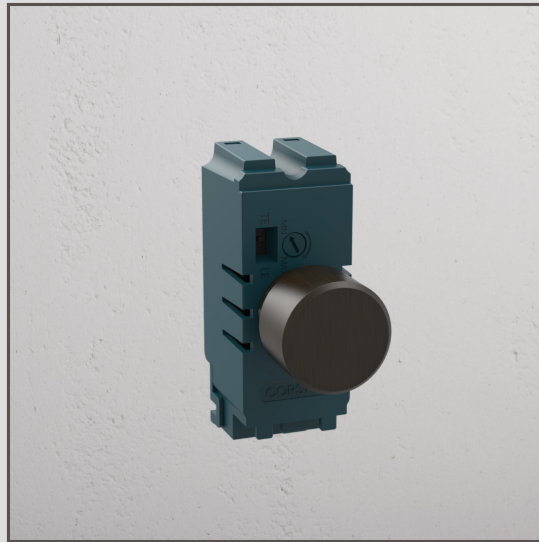


Two Way Dimmer Switch - Bronze

10704



Using our switch components, you can create any combination of plate and switch that you need.

Our rotary dimmers have a collar underneath the rotating knob that hides all the working parts.

We've made both the knob and collar from solid brass (rather than plastic wrapped in metal) to create perfectly crisp edges.

Our dimmers won't flicker or buzz when you use them with a suitable bulb, and you can set the minimum bulb brightness.

Bronze is our boldest finish, but it isn't shiny or bright, so it has a subtle side to it too. It's a deep matt brown colour that's almost black in some lights.

- Switch made from solid brass
- Expertly reengineered electronics, using the highest-quality components, to create the most reliable dimmer
- Suitable for trailing edge or leading edge modes
- Must be used with our bronze-finished (or paintable) plates
- Switches rated to 20A
- 230-250V~50Hz
- Must be combined with two-way or intermediate toggle switches to control the same light from multiple locations. The connected toggle switches can turn the light on and off
- Minimum and maximum circuit load when dimming with trailing edge (TE): 5W–150W
- Minimum and maximum circuit load when dimming with leading edge (LE): 5W–100W